

# PRODUCT SETUP FACT SHEET



## STACKABLE CORFLUTE CUBE

400x400mm

### GENERIC FACTS:

- Convert all text to outlines
- 5mm bleed requirement
- File provided in CMYK only
- Our recommended rich black break down in 40%C, 40%M, 40%Y, and 100%K
- Supplied as press ready PDF

### IMPORTANT DESIGN NOTES:

- As per industry standard colours may vary up to 5%
- For the best colour accuracy please refer to a Pantone colour guide and not your screen.

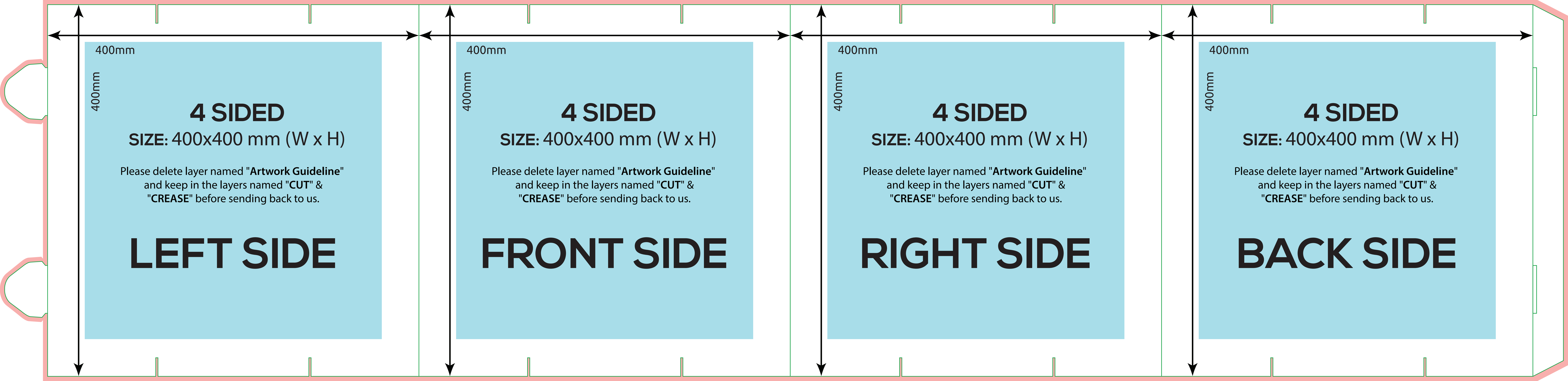
### WHAT IS BLEED?

When designing for print it is important to remember that it can be difficult to trim a job right on the edge of a design. In order to achieve the best result possible, you will need to extend your design past the trim lines, so the design can easily be cut down to size. The area that extends past your trim lines is called 'bleed'. In order to get the best results when designing for print, it's important to ensure your artwork always extends past the trim lines.



### PRODUCT SPECIFICS:

- Artwork size: 400mm x 400mm (WxH)
- Use of vector image recommended
- Please delete layer named "Artwork Guideline" and keep in the layers named "CUT" & "CREASE" before sending back to us.
- 5mm bleed requirement



400mm

400mm

**4 SIDED**

SIZE: 400x400 mm (W x H)

Please delete layer named "Artwork Guideline"  
and keep in the layers named "CUT" &  
"CREASE" before sending back to us.

**LEFT SIDE**

400mm

400mm

**4 SIDED**

SIZE: 400x400 mm (W x H)

Please delete layer named "Artwork Guideline"  
and keep in the layers named "CUT" &  
"CREASE" before sending back to us.

**FRONT SIDE**

400mm

400mm

**4 SIDED**

SIZE: 400x400 mm (W x H)

Please delete layer named "Artwork Guideline"  
and keep in the layers named "CUT" &  
"CREASE" before sending back to us.

**RIGHT SIDE**

400mm

400mm

**4 SIDED**

SIZE: 400x400 mm (W x H)

Please delete layer named "Artwork Guideline"  
and keep in the layers named "CUT" &  
"CREASE" before sending back to us.

**BACK SIDE**